



The leading medical device end-to-end global supply chain conference

Don't miss our next event - See the details here!

August 14-16 2015 • Rancho Bernardo Inn • San Diego, CA
www.logimedusa.com

2015 Event Highlights



WORLDWIDE BUSINESS RESEARCH



LogiMed brings together supply chain and equipment executives from medical device to develop effective ways of enhancing their end-to-end supply chains

LogiMed 2015 Attendees Talked About How To:

1 **Improve customer experience**
to drive loyalty to new levels

2 **Manage UDI**
& other challenges of the changing regulatory landscape

3 **Capture emerging Markets**
& enhance the global supply chain

Sponsorship Opportunities for LogiMed 2016 are now available!

Contact: Jodi Richter Sponsorship Director at 646 200 7485 or sponsor@wbresearch.com



“An excellent venue to share and learn with others in the industry that are dealing with the same global challenges in our day-to-day operations.”



Jim Caruso
Director of Corporate Planning
Covidien



Sponsorship Opportunities for LogiMed 2016 are now available!

Contact: Jodi Richter Sponsorship Director at 646 200 7485 or sponsor@wbresearch.com





Sponsorship

Sponsorship is now open for LogiMed 2016

A sponsor of **LogiMed** could be any b2b service provider, consultancy, or supplier that offers solutions to the Medical Device Supply Chain industry.

Sponsorship is the best way to get your brand in front of the companies you're targeting. We've got the decision-makers, and you have a solution they need.

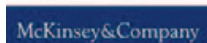
Your next big deal is a handshake away at LogiMed 2016.



Did you know:

77% of b2b marketers find in-person meetings the most effective strategy in selling their products?

Thanks To Our 2015 Sponsors and Exhibitors!



Sponsorship Opportunities for LogiMed 2016 are now available!

Contact: Jodi Richter Sponsorship Director at 646 200 7485 or sponsor@wbresearch.com



Audience Snapshot



209

Attendees



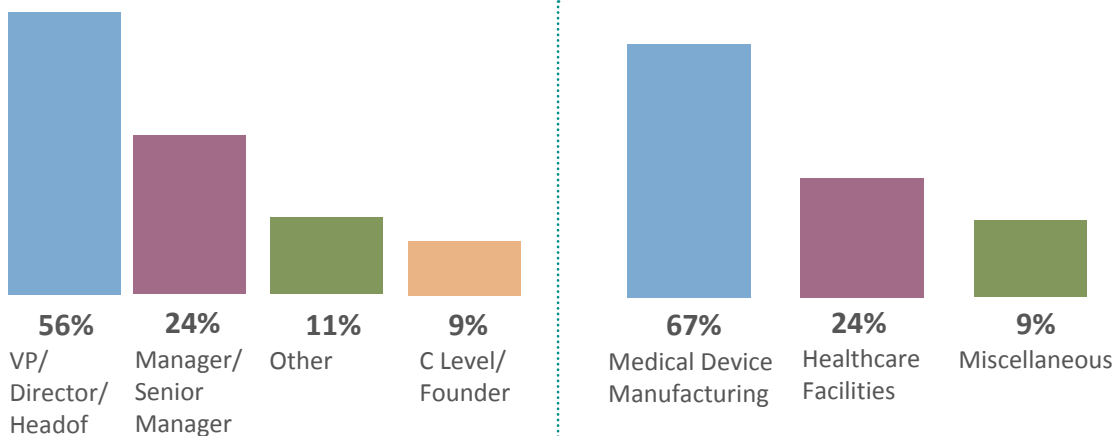
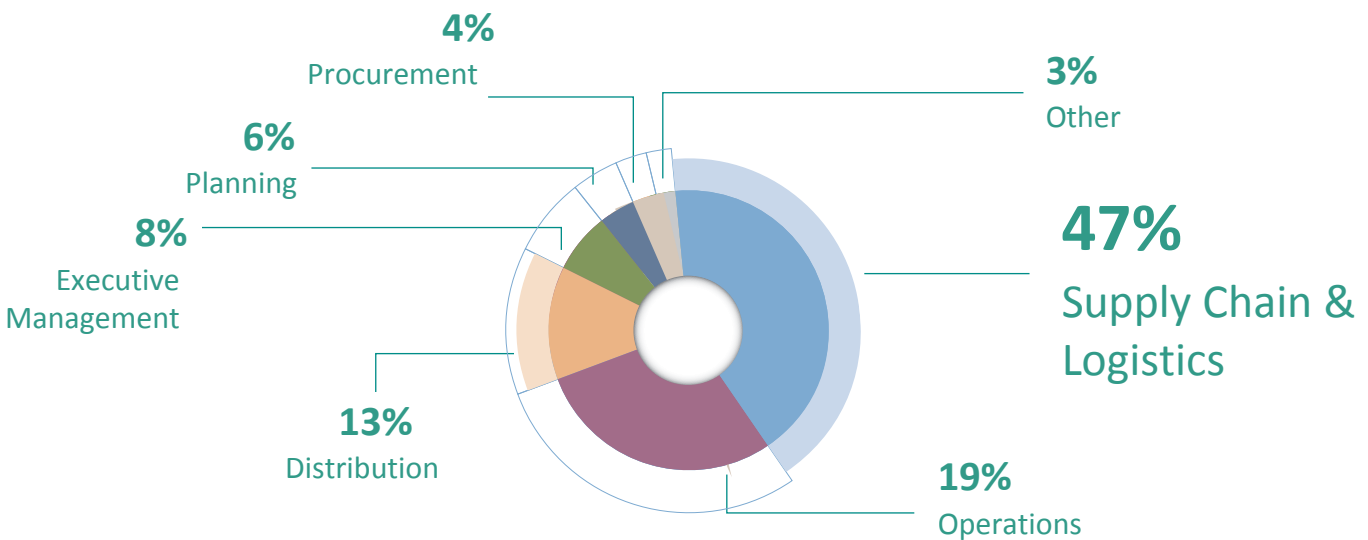
53

Speakers



133

Companies



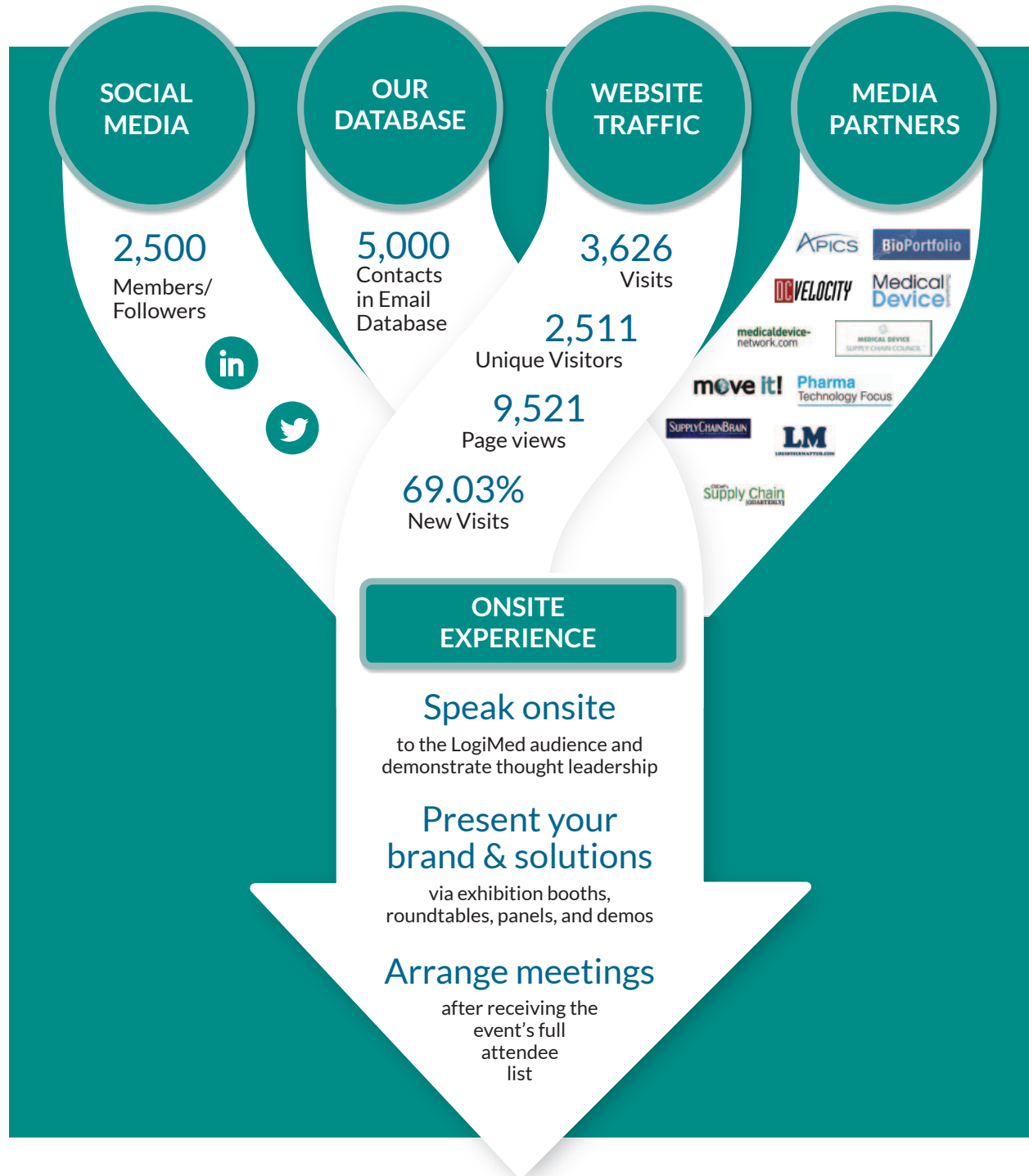
Sponsorship Opportunities for LogiMed 2016 are now available!

Contact: Jodi Richter Sponsorship Director at 646 200 7485 or sponsor@wbresearch.com



Your Reach As A Sponsor

As a sponsor of the event, your brand gets guaranteed exposure before, during, and after the conference. Here's how:



Your next client.

Sponsorship Opportunities for LogiMed 2016 are now available!

Contact: Jodi Richter Sponsorship Director at 646 200 7485 or sponsor@wbresearch.com





Sample Attendee List

| Company | Job Title |
|-------------------------|---------------------------------------|
| Amedica | Sr. Director Operations |
| BD Biosciences | Senior Director, Supply Chain |
| Becton Dickinson | Vice President of Global Supply Chain |
| BJC Healthcare | Chief Supply Chain Executive |
| Boston Scientific | Manager Supply Chain Engineering |
| CEPHEID | International Logistics Manager |
| Edwards Lifesciences | Sr. Manager, Global Supply Chain |
| Gartner | Research Director, Supply Chain |
| Johnson & Johnson | DiWW Supply Chain Director |
| Medtronic | Program Director, Supply Chain |
| NeoTract | Manager of Supply Chain Logistics |
| Smith & Nephew | Sr. Director, US Commercial Logistics |
| Teleflex Medical Europe | Director, Global Logistics |

[Request the FULL attendee list here](#)

Sponsorship Opportunities for LogiMed 2016 are now available!

Contact: Jodi Richter Sponsorship Director at 646 200 7485 or sponsor@wbresearch.com



LogiMed USA 2015 Speaking Faculty:

Manufacturers:



Sheri Henck
VP Global Supply Chain & Device
Value Stream Operations
Medtronic



Larry Smith
VP, Global Supply Chain
Becton Dickinson and Co.



Ian MacDiarmid
Director, Division Supply
Abbott Vascular



Rick Desmarais
Director Lean &
Operational Excellence
**Johnson & Johnson
HealthCare Systems Inc.**



Ivan Lai
Director of Global Supply Chain
Planning
Stryker



Dottie Barr
VP Global Supply Chain
Management
Haemonics



Rob Varner
Senior Director, Americas
Distribution
Medtronic



Jon Wendt
Director, US Distribution &
Logistics Services
Stryker



Ron Schlenker
Director Supply Chain
Varian Medical Systems



John Washington
Senior Director, Global Supply
Chain – Critical Care
Edwards Lifesciences



Carter Stephenson
VP Operations
Northwest Biomet



Stacey Tapler
Director, Logistics
B Braun Medical



Anthony O'Callaghan
Director Worldwide Distribution
Integra LifeSciences



Don Lynch
Director of Supply Chain
Welch Allyn



Mark Hunter
Senior Director, Supply Chain
Luminex Corporation



Scott Williams
Sr. Director, Supply Chain
Dexcom



Sue Shay
Global Inventory Director
Biomet



Rupa Chatterjee
Director Assets & Inventory
Aesculap



Jenny Gough
GS1 Specialist, Operations
Molnlycke Health Care



Marty Kerber
SVP, Engineering and
Manufacturing
inSleep Technologies



Nathan H. Swishelm
Director of Supply Chain
ABT Molecular Imaging



Bud Drummey
Senior Director, Manufacturing
Quanterix Corporation



Brian Harrington
Director, Supply Chain
Management
MicroVenton Terumo



Deedee Adams
Director, Global Demand
Planning, Program Lead,
Operation STRIVE
Maquet Getinge Group



Rudy Escala Ratliff
Director: Distribution &
Logistics; Americas
Nobel Biocare



John Ordway
VP Operations
Moximed



Alan J. Rust
Corporate Director-Distribution
CONMED Corporation



Michael Harris
Director Global Logistics
Care Fusion



John Curtis
Global Logistics Director
CR Bard



Tim Regan
Director Global Logistics
Teleflex



Scott Sample
Director of Product
Development
Cyberonics



Dawn Fowler
Sr. Manager, Global Labeling &
Documentation
Endologix

"You ran a nice conference. Good participants and a nice venue."

- Todd Jackson, Former VP Global Supply Chain Planning, Boston Scientific

Sponsorship Opportunities for LogiMed 2016 are now available!

Contact: Jodi Richter Sponsorship Director at 646 200 7485 or sponsor@wbresearch.com



Speaker Highlights



Exploring The **Future Of Consignment Inventory Management** To Align Your Operations For Success

Todd Jackson
VP Global Supply Chain
Planning
Boston Scientific



Designing A **Value Stream** That Is Optimized For Your Customer

Sheri Henck
VP Global Supply Chain
Medtronic



Optimizing Your **Global Distribution Network** To Maintain Cost And Meet Customer Demands

Alan Rust
Director of Supply Chain
CONMED



Determining The Appropriate **Level Of Inventory** In Your Supply Chain To Minimize Cost And Maintain Exceptional Service

Jim Caruso
Director of Corporate
Planning
Covidien

Don't Miss Out On The Next Event!

Sponsorship is now OPEN for LogiMed 2016



LogiMed 2016
April 11-13, 2016



Lock in your spot today! - Email me here

Our Related Events Include:



LogiPharma



Sponsorship Opportunities for LogiMed 2016 are now available!

Contact: Jodi Richter Sponsorship Director at 646 200 7485 or sponsor@wbresearch.com





About Worldwide Business Research (WBR)



We develop **a forum to discuss the issues your customers/prospects care most about** and the solutions and strategies that can help them leapfrog over their biggest challenges.



We're a research and conference company with **over 20 years of experience.**



We now deliver **over 100 quality networking and content focused conferences** across the globe.



What began as a mere 12 conference operation has steadily grown into a **well-established and reputable research and conference company** with offices in London, New York, Toronto and Singapore.

"The quality of the delegates is great and includes the decision maker which is great to see, everyone here is at the right level, director level, VP level, and also importantly some consultants in the industry which enable us as a supplier to build more of an independent view."

-Peter Nichols, Managing Director, Pantech International

Sponsorship Opportunities for LogiMed 2016 are now available!

Contact: Jodi Richter Sponsorship Director at 646 200 7485 or sponsor@wbresearch.com

