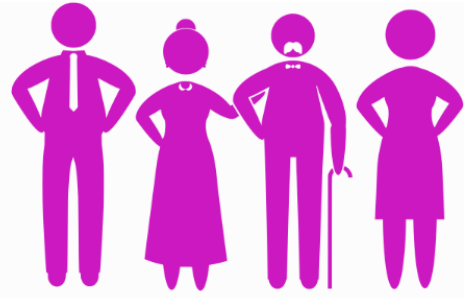


AGED CARE



TRANSFORMATION

20-21 MARCH | INTERNATIONAL CONVENTION CENTRE (ICC) SYDNEY

DAY ONE | 20 MARCH 2024

10:20	Event Opening Remarks from the Chair Julianne Parkinson, CEO, Global Centre for Modern Ageing
10:30	THINKTANK Making Contemporary Aged Care Facilities and Care Models Financially Viable and Sustainable Moderator: Arif Mohamed, VP Residential, AlayaCare Industry Experts: Lee Martin, Chief Executive Officer, Tanunda Lutheran Homes Mick McHugh, National Asset Manager Aged & Community Care, Calvary Health Care Jan Golembiewski, CEO, Psychological Design Architecture
11:20	GLOBAL CENTRE FOR MODERN AGEING KEYNOTE Co-Designing Solutions With Consumers and Technology Vendors To Transform The Future of Aged Care Julianne Parkinson, CEO, Global Centre for Modern Ageing
11:40	ENABLING SOCIAL CONNECTEDNESS AMONGST SENIORS How Bolton-Clarke Co-Designed A Social Prescribing Model To Improve Health and Wellbeing of Isolated Seniors in the South East Melbourne Primary Health Network Area Deidre McGill, Chief Operating Officer Home & Community Support, Bolton Clarke
12:00	NETWORKING BREAK
12:30	ENABLING HEALTHY AGEING @ AT SOUTHERN CROSS CARE (SA, NT & VIC) Implementing Wellness-Centred Models of Cares with Evidence-Based Outcomes for Older Australians Dr Tim Henwood, Group Manager, Research and Development, Southern Cross Care (SA, NT & VIC)
12:50	PROMOTING FREEDOM OF MOVEMENT, INDEPENDENCE, AND RESIDENT CHOICE An Insight Into New Direction Care's Groundbreaking MICRO TOWN® Aged Care Community Development and The House Companion™ Support Worker Model Greg Aleckson, Director, New Direction Care
13:10	NATIONAL AGED CARE DESIGN PRINCIPLES AND GUIDELINES An Update From The Federal Health and Aged Care Department on Building Contemporary Aged Care Facilities That Meet The Needs of Our Seniors Eliza Hazlett, A/g Assistant Secretary – Dementia, Diversity and Design Branch, Australian Department of Health and Aged Care
13:30	ROBOTS ARE THE FUTURE OF AGED CARE Meeting Minimum Care Minutes Standards, Reducing Workforce Burden and Improving Resident Experience Through Robots Axil, Robbie & Speckle Lee Martin, Chief Executive Officer, Tanunda Lutheran Homes

13:50	NETWORKING BREAK
14:10	From Ideas to Impact: A Guide to ESG Success in Healthcare Kaushik Sridhar, Director, Orka Advisory (Award-winning ESG Thought Leader)
14:30	MAKING PALLIATIVE CARE BUSINESS AS USUAL IN RESIDENTIAL AGED CARE FACILITIES PACOP's Assessment of Opportunities To Drive Uptake of Robust, Evidence-based Models In Residential Aged Care Facilities Prof. Claire Johnson, Director of the Palliative Aged Care Outcomes Program (PACOP), University of Wollongong
14:50	HammondCare's Investment In New-Age Aged Care Facilities, Models and Services Katie Formston, Head of Design - Property and Capital Works, HammondCare Jonathan Chew, Sector Lead for Aged Care & Seniors Living, Bickerton Masters
15:10	THINKTANK Re-defining The Future of 'Work' and 'Workforce' In Aged Care Moderator: Natasha Egan, Editor, Australian Ageing Agenda Industry Experts: Dr Tanya Petrovich, Manager Innovation, Dementia Australia Julianne Parkinson, CEO, Global Centre for Modern Ageing Deidre McGill, Chief Operating Officer Home & Community Support, Bolton Clarke
16:00	Closing Remarks and End of Event Julianne Parkinson, CEO, Global Centre for Modern Ageing

DAY TWO 21 MARCH 2024	
09:50	Event Opening Remarks from the Chair Julianne Parkinson, CEO, Global Centre for Modern Ageing
10:00	CREATING A CONNECTED AGED CARE SYSTEM ACROSS PROVIDERS, SENIORS, VENDORS AND THE FEDERAL GOVERNMENT Modernising Aged Care and Government Digital Solutions (including the Government Provider Management System (GPMS) and Business-to-Government (B2G) Developer Portal Fay Flevaras, First Assistant Secretary Digital Transformation & Delivery - Aged Care Reform, Australian Department of Health and Aged Care
10:20	Reality Check: Aged Care Trends and Challenges for 2024 David Griffiths, Senior Vice President, Compliance, Ideagen
10:50	THINKTANK AI, Technology and Policy Innovation Will Transform Aged Care: Here's How You Prepare For This Change Moderator: Julianne Parkinson, CEO, Global Centre for Modern Ageing Industry Experts: Claire Scapinello, Chief Executive Officer, ECH George Margelis, Director, Aged Care IT Council
11:30	How Uniting NSW Dramatically Reduced Candidate Time-to-Compliance Paul Hayton, Head of Talent and Workforce Planning, Uniting NSW Michael Momsen, CEO, Zipline Nonny Evans, Director of Healthcare, Zipline
12:00	FIRESIDE CHAT: What Matters Most When Transforming Aged Care Moderator: Annette Hili, General Manager ANZ, Alaya Care Industry Experts:

	Deidre McGill, Chief Operating Officer Home & Community Support, Bolton Clarke Sarah Newman, General Manager BaptistCare at home, BaptistCare NSW, ACT & WA
12:40	NETWORKING BREAK
13:00	ECH GROUP'S 5 YEAR STRATEGY TO LEAD A NEW ERA OF AGED CARE SERVICES Leveraging Strategic and Operating Model transformation To Address Systemic Changes In Aged Care Needs Claire Scapinello, Chief Executive Officer, ECH
13:20	UNITING NSW.ACT'S TRYST WITH AUGMENTED REALITY AND ARTIFICIAL INTELLIGENCE Helping Staff Transition From Reactive to Predictive Care Models By Developing Design-Driven Technology Solutions Ramesh Raghavan, Head of Strategy & Architecture, Uniting
13:40	EMPOWERING STAFF WITH CONVERSATIONAL AI @ ST ANDREW'S VILLAGE BALLINA Delivering High Quality Care and Operational Efficiencies Through Technology-Enabled Workforce Operations and Services Todd Yourell, Chief Executive Officer, St Andrew's Village Ballina
14:00	BLUE CARE'S PARTNERSHIP WITH THREE PRIVATE HOSPITALS TO DELIVER ACUTE CARE IN THE HOME How A Mix of Virtual and HITH Based Specialist and Allied Care Services Are Improving Seniors Choice, Reducing Resource Strain and Improving Bed Utilization In The Healthcare System Sue-Ellen Smith, Head of Specialised Services – Statewide, Blue Care - Community Services
14:20	Implementing The U.S. Founded Green House Project (GHP) Model of Care At Healthia To Enable Financially Sustainable, Person-Directed Care Linda Feldt, Acting CEO, ACH Group
14:40	Closing Remarks and End of Event Julianne Parkinson, CEO, Global Centre for Modern Ageing
16:05	Grand Prize Giveaway at the Healthcare Startups Stage